



# 2019 ANNUAL REPORT

# NEW MEXICO MESA

*Building tomorrow's  
mathematicians, engineers  
and scientists. . .Today!*



# A, INCORPORATED

## 2019 ANNUAL REPORT

---

### *Table of Contents*

|   |       |
|---|-------|
| From the Board President & Executive Director .....           | 4     |
| Who We Are .....  | 5-6   |
| Field Trip .....  | 7     |
| Service Learning .....  | 8     |
| NM MESA Schools .....   | 9     |
| NM MESA Regions .....   | 10    |
| NM MESA Statistics .....                                      | 11-14 |
| NM Mesa Advisor Testimonials, Achievements & Highlights ..... | 15    |
| Statement of Functional Expenses .....                        | 16    |
| Student Testimonials .....                                    | 17    |
| NM MESA Donors .....  | 18-19 |



# BOARD PRESIDENT & EXECUTIVE DIRECTOR

35 years can be a lot of years in the nonprofit world. That is how long New Mexico Mathematics, Engineering, Science Achievement, Inc. (NM MESA) has been around. Not very many nonprofits can say that in New Mexico. NM MESA has impacted thousands of students and teachers throughout its 35-year history. As the premier pre-college STEM program in New Mexico, we are fortunate to have the teachers and students that make this recognition possible. Along with the teachers, the NM MESA staff deserves this credit also for their unwavering dedication and compassion to improve the well-being of New Mexico students. This in turn improves college/university graduation rates and having qualified individuals to address our state's workforce concerns. NM MESA is ready to assist the state and the nation.

Organizations who are constantly evolving have the best chance to survive and make an impact. NM MESA is that type of organization and we strive to stay relevant and yet still help the students who are struggling with academics and who lack a sense of belonging in their schools and who are uncertain about their future. Our tested program offerings improve student academic outcomes and inspire hundreds of students every year to explore possibilities they never thought possible.

In 2018 the White House Office of Science and Technology Policy and National Science Foundation awarded NM MESA the Presidential Award for Excellence in Science, Mathematics, and Engineering Mentoring. NM MESA was one of fourteen who received this prestigious honor. Awardees represent schools and organizations in all 50 U.S. states.

CONGRATULATIONS to our middle school program from Chaparral Middle School from Chaparral, NM. The team of three students won the national championship of the MESA USA National Engineering Design competition. The Chaparral MS team faced teams from Arizona, Oregon, California, Utah, Washington, Maryland, and Pennsylvania.

These successes and achievement by NM MESA is a testament to the commitment and compassion of our partners, our financial supporters, our volunteers, and our staff. We, the NM MESA Board of Directors, thank you!



*President, NM MESA Board of Directors  
Jonathan Hawkins*



*Executive Director, NM MESA  
Tony Begay*

Sincerely,

A handwritten signature in black ink, appearing to be 'JH'.

Jonathan Hawkins  
President, NM MESA Board of Directors

Sincerely,

A handwritten signature in black ink, appearing to be 'Tony Begay'.

Tony Begay  
Executive Director, NM MESA



# WHO WE ARE

## Competition

STEM Competitive activities for students that challenges their knowledge and understanding of STEM. These activities provide students with the chance to meet other students from around the state and nationally. It improves their problem solving and leadership skills.

- *RoboRave*
- *Innoventure*
- *Supercomputing*
- *BEST Robotics*
- *CyberEChallenge*
- *Alternative Fuels Challenge*
- *NM Electric car challenge*
- *MESA Day*
- *AFRL's STEM Challenge Flight*
- *Envirothon*
- *Science Olympiad*
- *School Science Fair*
- *MESA USA National Engineering Design Competition*
- *Vex Robotics, Future Cities – UNM Architecture College*



## Workshops/Speaker

Workshops held at the MESA school to help students and Advisors prepare for any STEM competitions, including MESA Day and MESA USA. These activities are also used to help enhance students' awareness of STEM careers, preparation for higher education or other related STEM or STEAM subjects.

- *AMP event workshops*
- *Citizen Science*
- *Soilutions*
- *Park Ranger*
- *Animal Humane Society*
- *Math Moves U*
- *UNM Engineering*
- *NM Tech*
- *NMSU Agricultural Sciences*
- *Gear Up Careers*
- *Sandia Peak/Tram*
- *Catching the Dream*
- *NM Military Institute*
- *Coding 101*
- *NM Highlands University*
- *UNM Physics and Astronomy*
- *Natural History Museum*
- *Explora*
- *Sandia National Labs*
- *Los Alamos National Labs*
- *Northern Community College*

# FIELD TRIP

## *College Visit*

A MESA planned trip to a college to learn about admissions requirements, the process in applying, a view of campus life, and their next steps toward higher education.



## *STEM Industry*

Activities planned by the NM MESA Advisors, or Regional Coordinator, away from the school site in order for students to experience new or novel STEM information and learning, and view how a STEM education relates in the workforce in a hands-on environment.



- NM Tech
- NM Highlands University
- New Mexico State University
- UNM
- Dine College
- New Mexico State Legislature
- Very Large Array
- Senior Incentive Field Trip to New Orleans, Louisiana
- Tent Rocks
- Tech Convention at UNM
- Old Town STEAMventure with UNM Architecture College
- STEM Discovery Day
- STEM Fiesta with Explora
- Dream Big Event with New Mexico Natural History Museum
- Math Moves U Explora
- ABQ Bio Park
- National Museum of Nuclear Science and History

- Hyde Memorial Park
- NM Military Institute
- Sandia Peak
- National Youth Image Summit
- Tijeras Creek
- Rio Mora Wildlife Refuge
- Sandia National Labs
- UNM Health Sciences Center
- Albuquerque Balloon Fiesta Park
- Air Force Research Laboratories
- Intel
- PNM
- Flight Simulators at NMSU
- Northrop Grumman
- Meow Wolf

*\*All activities listed are for College Visit and STEM Industry*

# SERVICE LEARNING

Activities planned by Advisors in which students' volunteer time and effort in projects benefitting their school or community. The emphasis is in growing and developing STEM leadership for the future in our students. Strong stewardship grows strong leaders.

- Food Drive
- Roadrunner Foodbank
- LIMBS International
- Veterans Drive
- School Clean Up
- School Eco-Systems Project
- HS MESAs mentor MS MESA students
- MS MESA's mentor elementary school students
- Raise funds for Animal Humane Society
- Working with Senior Citizens
- Create school food banks and clothing banks
- Clean water projects
- Summer Reading Fiesta at Highlands University
- Homeless Clothing Drive

## *Other Activities that NM MESA Students participate in:*

- **FUNDRAISING**  
These activities provide students with the opportunity to earn funds for use in MESA related activities.
- **LEADERSHIP**  
These activities expose students to opportunities to grow in his/her interpersonal, leadership and group communication skills.
- **STUDENT MEETINGS**  
These recurring weekly meetings are student led and allow students to prepare for upcoming competitions, work on STEM related activities and take care of typical club business.



# MESA SCHOOLS

## NORTH CENTRAL (16)

Atrisco Heritage Academy HS  
Cibola HS  
East Mountain HS  
West Mesa HS  
Ernie Pyle MS  
Jefferson MS  
Jimmy Carter MS  
John Adams MS  
Taft MS  
Taylor MS  
Truman MS  
Bernalillo HS  
Bernalillo MS  
Cochiti MS  
Pojoaque Valley MS  
Milagro MS

## NORTH (16)

Carlos F. Vigil MS  
Española Valley HS  
Memorial MS, Robertson HS  
Mesa Vista MS  
Mesa Vista HS  
Lazaro Garcia MS  
Mora HS  
Santa Rosa HS  
Santa Rosa MS  
Anton Chico MS  
Taos HS  
Taos MS  
West Las Vegas HS  
West Las Vegas MS  
West Las Vegas Valley JHS  
Robertson HS  
Memorial MS

## SOUTHWEST (16)

Cobre HS  
C.C. Snell MS  
Deming HS  
Deming MS  
Red Mountain MS  
Alta Vista Early College HS  
Chaparral HS  
Chaparral MS  
Centennial HS  
Lynn MS  
Las Cruces HS  
Vista MS  
Mayfield HS  
Ocate HS  
Sarracino MS  
Socorro HS

## WEST (16)

Crownpoint HS  
Gallup HS  
Miyamura HS  
Middle College HS  
Thoreau HS  
Tohatchi HS  
Crownpoint MS  
Chief Manuelito MS  
John F Kennedy MS  
Thoreau MS  
Tohatchi MS  
Grants HS  
Laguna Acoma HS  
Laguna Acoma MS  
Los Alamos MS  
Navajo Preparatory School

## CENTRAL INNER (16)

Albuquerque HS  
Del Norte HS  
Garfield MS  
Manzano HS  
nexGen Academy  
Kennedy MS  
Valley HS  
Van Buren MS  
Amy Biehl HS  
South Valley Academy  
Los Lunas HS  
Los Lunas MS  
Valencia HS  
Valencia MS  
Belen HS  
Belen MS

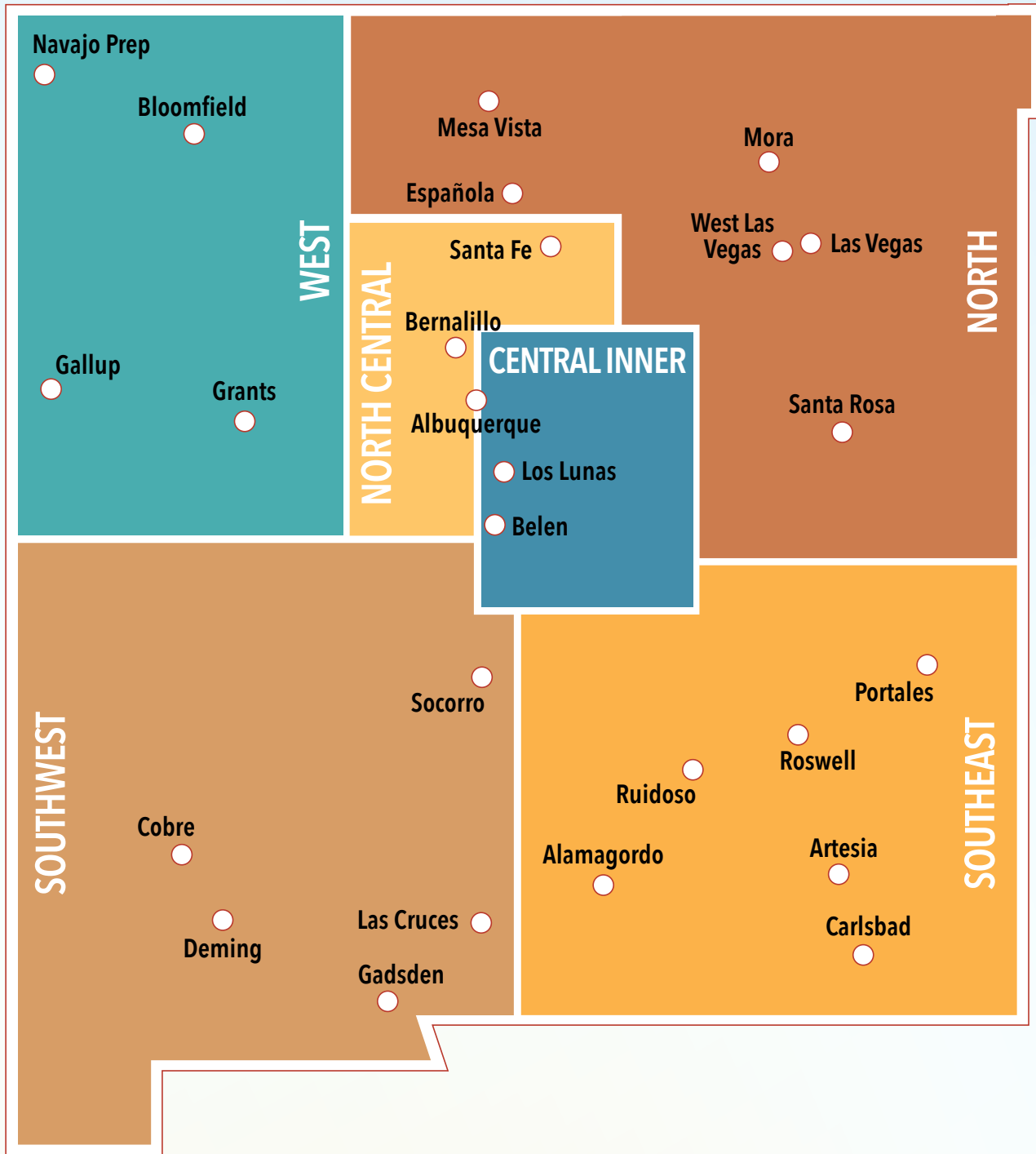
## SOUTHEAST (16)

Alamogordo HS  
Holloman MS  
Mountain View MS  
Carlsbad HS  
Carlsbad Intermediate School  
Carlsbad Sixth Grade Academy  
Portales HS  
Portales JH  
Goddard HS  
Roswell HS  
Berrendo MS  
Mesa MS  
Mountain View MS  
Sierra MS  
Ruidoso HS  
Ruidoso MS





# MESA REGIONS



**CENTRAL INNER**

*Albuquerque  
Belen  
Los Lunas*

**NORTH CENTRAL**

*Albuquerque  
Bernalillo  
Santa Fe*

**NORTH**

*Las Vegas  
West Las Vegas  
Mora  
Española  
Mesa Vista*

**SOUTHEAST**

*Alamogordo  
Artesia  
Carlsbad  
Portales  
Roswell  
Ruidoso*

**SOUTHWEST**

*Cobre  
Deming  
Gadsden  
Las Cruces  
Socorro*

**WEST**

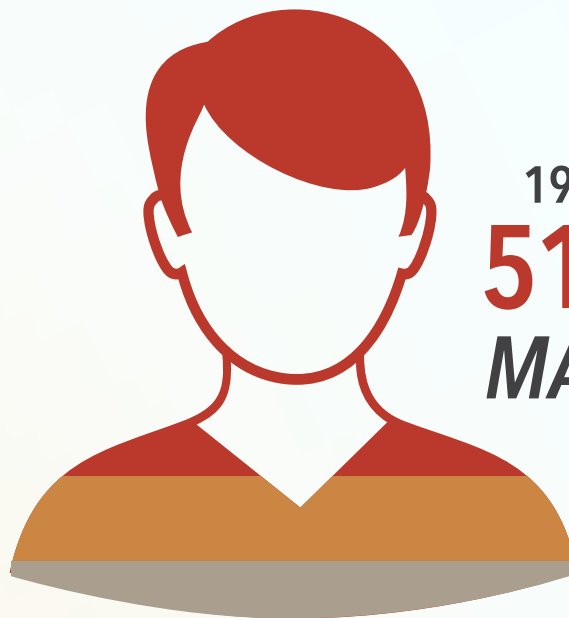
*Bloomfield  
Gallup  
Grants  
Navajo Prep*

# STUDENT DEMOGRAPHICS

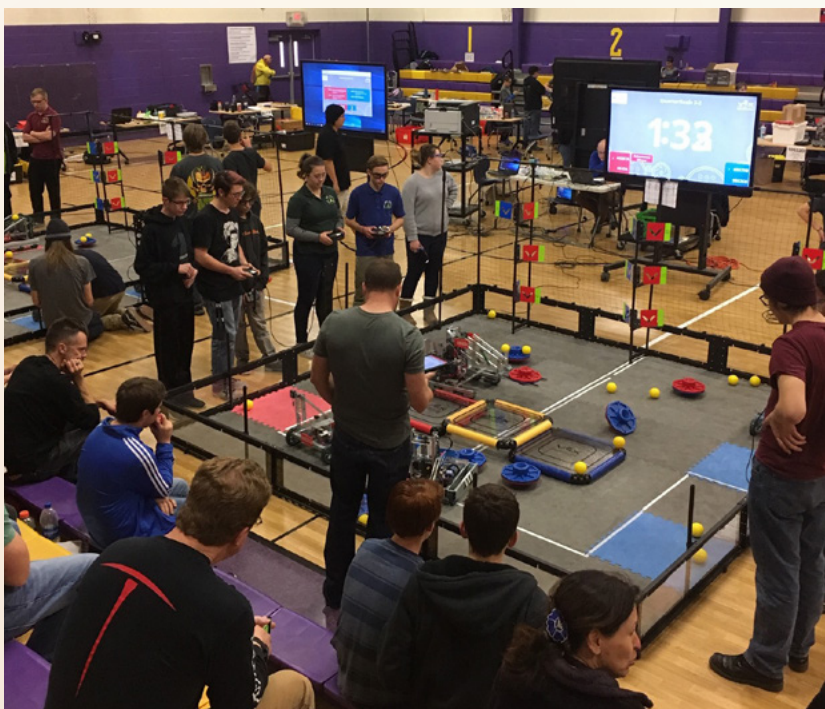
Source: MESA Information Management System



1891  
**49%**  
**FEMALE**

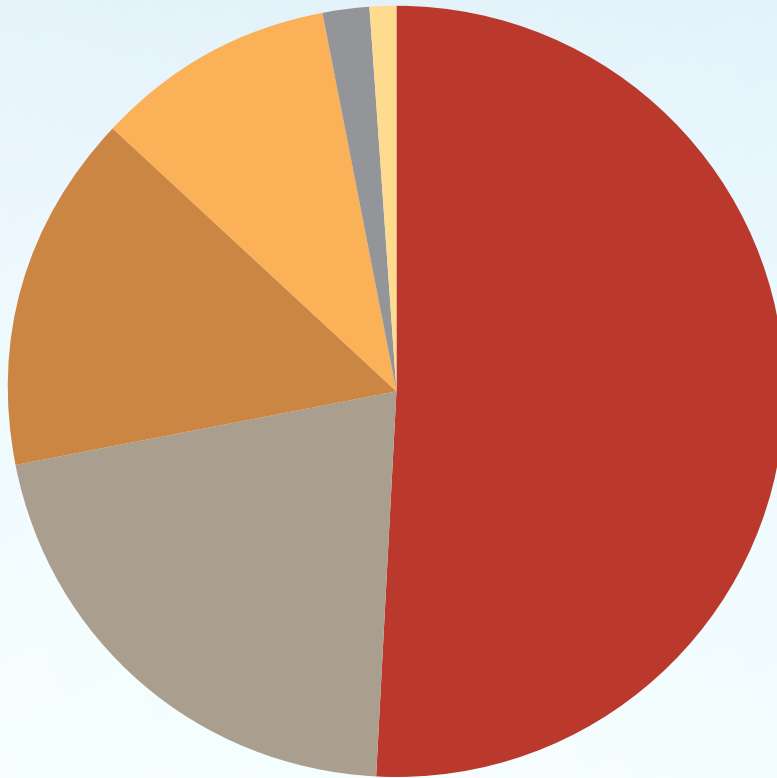


1931  
**51%**  
**MALE**



# STUDENT DIVERSITY

Source: MESA Information Management System



**1812 (49%)** Hispanic (Spanish Culture of Origin)

**509 (14%)** Anglo (not Hispanic Origin)

**199 (5%)** American Indian or Alaskan Origin

**98 (3%)** Asian or Pacific Islander

**56 (1%)** Black (not Hispanic Origin)

**843 (23%)** Undeclared



# COLLEGES ATTENDING

Source: MESA Information Management System

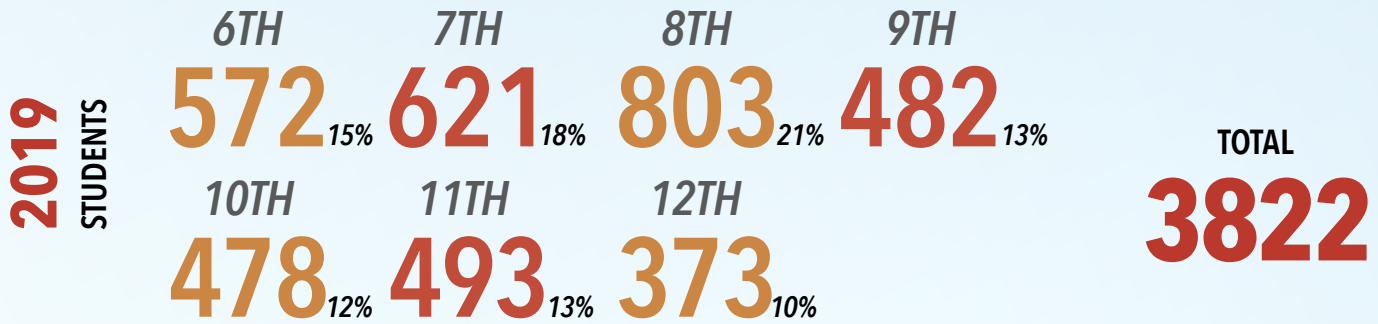
|  |    |  |    |
|--|----|--|----|
| <i>Baylor University</i>               | 1  | <i>Northern Arizona University</i>                 | 1  |
| <i>Brigham Young University</i>        | 1  | <i>Northern Michigan University</i>                | 1  |
| <i>CNM</i>                             | 5  | <i>South Dakota School of Mines and Technology</i> | 1  |
| <i>Colorado School of Mines</i>        | 1  | <i>Texas Tech</i>                                  | 2  |
| <i>Cornell</i>                         | 1  | <i>Tulsa Welding School</i>                        | 1  |
| <i>Duke University</i>                 | 1  | <i>University of Alabama</i>                       | 1  |
| <i>Eastern New Mexico University</i>   | 5  | <i>University of Colorado</i>                      | 2  |
| <i>Fort Lewis College</i>              | 4  | <i>University of Texas</i>                         | 2  |
| <i>Luna Community College</i>          | 5  | <i>University of Southern California</i>           | 1  |
| <i>Navajo Technical University</i>     | 1  | <i>University of New Mexico</i>                    | 28 |
| <i>New Mexico Highlands University</i> | 8  | <i>Western New Mexico University</i>               | 1  |
| <i>New Mexico Tech</i>                 | 16 | <i>Yale</i>  | 1  |
| <i>New Mexico State University</i>     | 39 |  |    |

# MAJORS DECLARED

Source: MESA Information Management System

|                                      |    |                                      |    |
|--------------------------------------|----|--------------------------------------|----|
| <i>Aerospace Engineering</i>         | 4  | <i>Forestry</i>                      | 2  |
| <i>Agricultural Science</i>          | 2  | <i>International Business</i>        | 1  |
| <i>Animal Science</i>                | 1  | <i>International Relations</i>       | 1  |
| <i>Astronomy</i>                     | 1  | <i>Journalism</i>                    | 1  |
| <i>Athletic Training</i>             | 1  | <i>Kinesiology</i>                   | 1  |
| <i>Biochemistry</i>                  | 5  | <i>Materials Science Engineering</i> | 1  |
| <i>Biology</i>                       | 16 | <i>Mathematics</i>                   | 3  |
| <i>Biomedical Engineering</i>        | 2  | <i>Mechanical Engineering</i>        | 12 |
| <i>Business Administration</i>       | 4  | <i>Medicinal Plant Chemistry</i>     | 1  |
| <i>Chemical Engineering</i>          | 1  | <i>Medical Engineering</i>           | 1  |
| <i>Chemistry</i>                     | 2  | <i>Metallurgical Engineering</i>     | 1  |
| <i>Civil Engineering</i>             | 6  | <i>Neuroscience</i>                  | 1  |
| <i>Communications</i>                | 1  | <i>Nuclear Engineering</i>           | 1  |
| <i>Computer Engineering</i>          | 2  | <i>Nuclear Medicine</i>              | 1  |
| <i>Computer Science</i>              | 6  | <i>Nursing</i>                       | 2  |
| <i>Creative Writing</i>              | 1  | <i>Paleontology</i>                  | 1  |
| <i>Criminal Justice</i>              | 2  | <i>Physics</i>                       | 1  |
| <i>Criminology</i>                   | 2  | <i>Political Science</i>             | 1  |
| <i>Dental Assistant</i>              | 1  | <i>Professional Welding</i>          | 1  |
| <i>Diagnostic Medical Sonography</i> | 2  | <i>Psychology</i>                    | 3  |
| <i>Digital Media</i>                 | 1  | <i>Radiology</i>                     | 1  |
| <i>Education</i>                     | 1  | <i>Science</i>                       | 1  |
| <i>Electrical Engineering</i>        | 2  | <i>Social Work</i>                   | 1  |
| <i>Engineering</i>                   | 6  | <i>Theater</i>                       | 1  |
| <i>English</i>                       | 2  | <i>Undeclared</i>                    | 6  |
| <i>Environmental Science</i>         | 1  |                                      |    |

# GRADE LEVEL Source: MESA Information Management System



# GEOGRAPHIC LOCATIONS Source: MESA Information Management System



**RURAL**  
**58%**

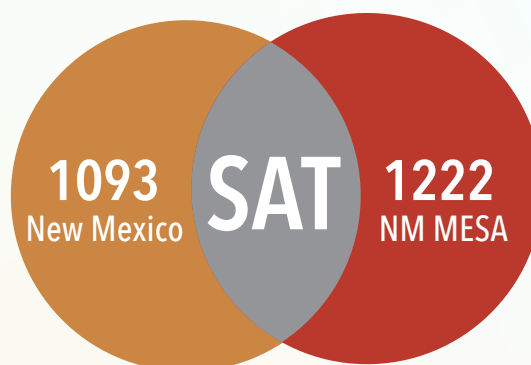
of NM MESA Students live in Rural area of New Mexico as defined by USDA - Economic Research Services



**URBAN**  
**42%**

of NM MESA students reside in an Urban area

# SENIOR ACADEMICS AVERAGE SCORES FOR 2018 - 2019 Source: MESA Information Management System



**AVERAGE GPA OF GRADUATING  
MESA SENIOR = 3.63**

# ADVISOR STATISTICS

Source: MESA Information Management System

**11 YEARS** average **TEACHING** experience of a MESA Advisor

**6 YEARS** average length of **SERVICE** of a MESA Advisor

**MIDDLE SCHOOL ADVISORS 74**

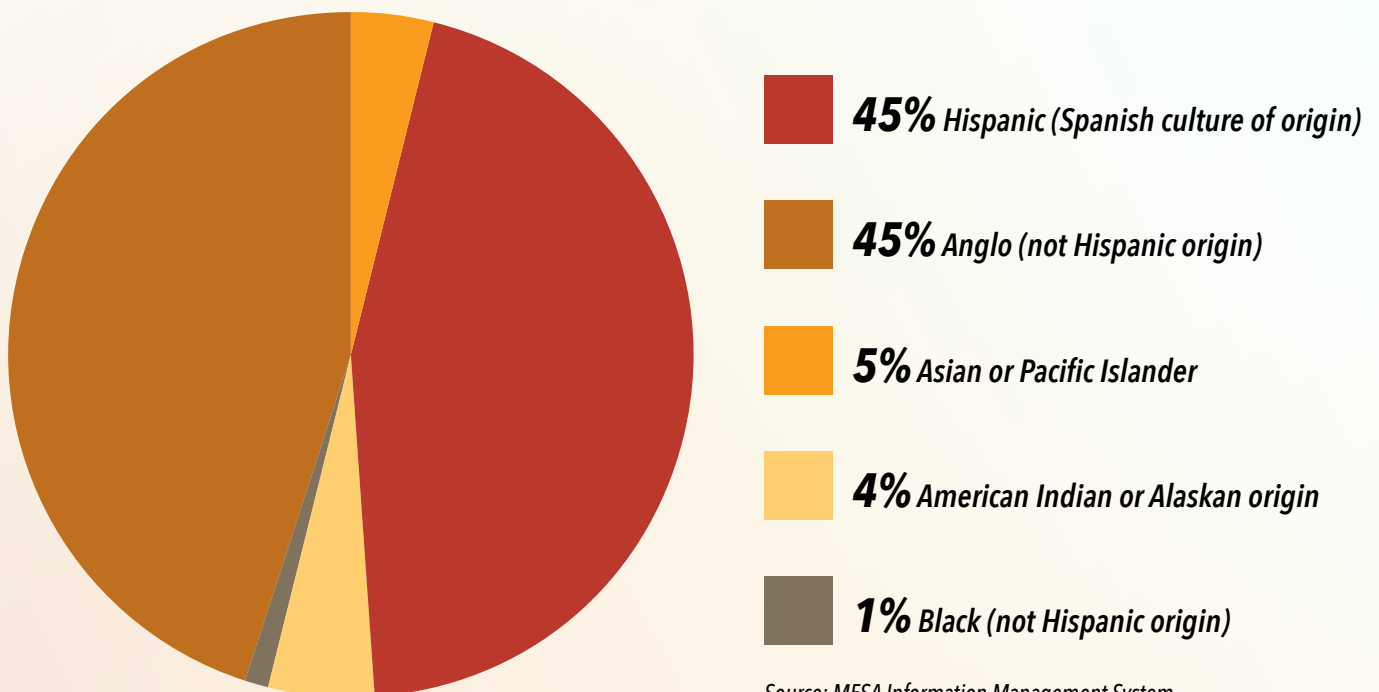
**HIGH SCHOOL ADVISORS 74**

**MALE 48%**

**FEMALE 52%**

# ADVISOR ETHNICITY

Source: MESA Information Management System



Source: MESA Information Management System

# ADVISOR TESTIMONIALS

---

*"MESA is an extremely beneficial program for students."*

*"I just love it and I'm proud to be a part of it. Thanks for all the supplies."*

*"Professional Development is a big help as a teacher in MESA"*

*"I like the idea that vocational education could become part of what MESA supports. Thank you for supporting students going into the military. "*

*"The MESA Program activities had been successful in sparking STEM interest in the students. There students who said they have a better understanding of what they want to pursue in the future because of the exposure they were given."*

## MESA ACHIEVEMENTS & HIGHLIGHTS

---

The senior Incentive Field Trip (SIFT) for this year was to San Francisco, Louisiana. 24 seniors, and 4 advisor chaperones from the NM MESA Programs statewide were selected to attend this annual activity.

New Mexico MESA teams did very well at the 2019 MESA USA National Engineering Design Competition in Tucson, Arizona. Chaparral Middle School placed first overall in the National Human Centered Engineering Design Competition, with their spoon and cup for visually impaired students. nexGen Academy took fourth place overall in this competition with their automated school hoop house system that would allow for year round growing opportunities for student gardens on campus.

NM MESA Students participated at the 2019 Alliance for Minority Participation Conference at New Mexico State University.

NM MESA brought back the statewide MESA Day competition hosted at the Albuquerque Convention Center. Over 330 MESA students from middle schools and high schools around the state, participated in on-site and prepared engineering competitions, and on-site math and science competitions.

29 NM MESA graduated seniors declaring majors at NMSU Engineering College received additional scholarships to attend NMSU Engineering.

Over \$107,000 in Loyalty Awards were distributed in the Fall of 2019 to NM MESA seniors that graduated in the Spring of 2019.

NM MESA and Devon Energy continue to partner to provide a New Mexico student from Lea or Eddy County with a scholarship to attend a four-year college of their choice in STEM related major. Two students have graduated under this partnership and three more are working on their engineering degrees with this scholarship providing them financial support.

# STATEMENT OF FUNCTIONAL EXPENSES

| ITEM                                   | PROGRAM SERVICES   | G&A              | FUNDRAISING     | TOTAL              |
|--|--------------------|------------------|-----------------|--------------------|
| <i>Salaries</i>                        | <b>\$409,817</b>   | <b>\$129,635</b> | <b>\$20,765</b> | <b>\$560,217</b>   |
| <i>Stipends</i>                        | <b>207,000</b>     | <b>8,812</b>     | <b>0</b>        | <b>215,812</b>     |
| <i>Employee Taxes &amp; Benefits</i>   | <b>72,319</b>      | <b>48,575</b>    | <b>3,388</b>    | <b>124,282</b>     |
| <i>Field Trips</i>                     | <b>116,702</b>     | <b>1,739</b>     | <b>0</b>        | <b>118,441</b>     |
| <i>Incentive Awards</i>                | <b>107,966</b>     | <b>0</b>         | <b>0</b>        | <b>107,966</b>     |
| <i>Professional Consultants</i>        | <b>1,805</b>       | <b>83,107</b>    | <b>0</b>        | <b>84,912</b>      |
| <i>Supplies</i>                        | <b>54,100</b>      | <b>4,849</b>     | <b>0</b>        | <b>58,949</b>      |
| <i>Travel</i>                          | <b>35,206</b>      | <b>15,035</b>    | <b>428</b>      | <b>50,669</b>      |
| <i>Occupancy</i>                       | <b>18,918</b>      | <b>17,108</b>    | <b>0</b>        | <b>36,026</b>      |
| <i>Meeting Meals</i>                   | <b>23,005</b>      | <b>3,983</b>     | <b>573</b>      | <b>27,561</b>      |
| <i>Gifts and Awards</i>                | <b>21,010</b>      | <b>2,335</b>     | <b>0</b>        | <b>23,345</b>      |
| <i>Telephone</i>                       | <b>9,685</b>       | <b>13,411</b>    | <b>0</b>        | <b>23,096</b>      |
| <i>School Activities</i>               | <b>22,759</b>      | <b>0</b>         | <b>0</b>        | <b>22,759</b>      |
| <i>Miscellaneous</i>                   | <b>1,635</b>       | <b>14,024</b>    | <b>0</b>        | <b>15,659</b>      |
| <i>Meetings &amp; Conferences</i>      | <b>11,970</b>      | <b>32</b>        | <b>0</b>        | <b>12,002</b>      |
| <i>Depreciation &amp; Amortization</i> | <b>0</b>           | <b>8,679</b>     | <b>0</b>        | <b>8,679</b>       |
| <i>Professional Development</i>        | <b>0</b>           | <b>6,802</b>     | <b>0</b>        | <b>6,802</b>       |
| <i>Printing &amp; Postage</i>          | <b>1,980</b>       | <b>4,326</b>     | <b>147</b>      | <b>6,453</b>       |
| <i>Marketing &amp; Advertising</i>     | <b>4,690</b>       | <b>125</b>       | <b>0</b>        | <b>4,815</b>       |
| <i>Interest</i>                        | <b>0</b>           | <b>1,118</b>     | <b>0</b>        | <b>1,118</b>       |
| <i>Repairs &amp; Maintenance</i>       | <b>0</b>           | <b>18</b>        | <b>0</b>        | <b>18</b>          |
| <b>TOTAL EXPENSES</b>                  | <b>\$1,120,567</b> | <b>\$363,713</b> | <b>\$25,301</b> | <b>\$1,509,581</b> |



# STUDENT TESTIMONIALS

---

## ***Danielle Tolino, Crownpoint High School, Western Region***

"NM MESA has brought me a lot of opportunities. I got to see different colleges and learn about what they can do for me. There is a whole world out there outside of New Mexico. NM MESA helped open my eyes to that. I was able to learn new and exciting things while I was in the program. I met new people who had the same interest as me. While I was in 11th grade I had a great opportunity to travel out of the state and out of the Four Corners area and it was a great experience. The program taught me to work together with others and to have great communications skills. I am thankful that MESA was offered at my school."

## ***Natalia Saiz, Valley High School, Central Inner Region***

"MESA Competitions have taught me to be an engineer. Programming Arduino to writing papers to performing a technical presentation. Due to our dedication my team was lucky enough to make it to the State competition for four years. I will always treasure these memories. MESA competitions will always be something I will hold dear. Partaking in competitions was half the experience. MESA allowed me to establish a close group of friends, meet people from across the state and it introduced me to many new experiences I would have never thought I could have. I was lucky enough to be one of the 24 students from the state of New Mexico to go on the 2019 Senior Incentive Field Trip to San Francisco. The trip was a chance in a lifetime. Through MESA I have learned how to become a good leader. The past seven years with MESA have always been there for me, I have to thank MESA for all the opportunities that I have been given since my first day of sixth grade."

## ***Savannah Garcia, Cibola High School, North Central Region***

"MESA is one of the core reasons I got interested in the field of engineering. In my first year of MESA I was part of the first all-girls team to win state. That journey was one of my first taste of victory in the STEM field paving the way for my dedication and success in STEM classes. In turn encouraging me to pursue a degree field of engineering."

## ***Lefonso Castillo Jr., Mora High School, Northern Region***

"I feel that having a MESA program has had a great impact on helping me choose my career path and major in a STEM field. I am from a small school district where we do not have a large selection of elective credits including STEM classes. The only STEM classes I have taken in high school were the required core classes for Science and Mathematics. My science teacher incorporated engineering, but we never had a class that just focused on this. NM MESA has helped fill that missing link at our school, which helped my classmates and myself score better on our assessments. NM MESA provided my classmates and myself opportunities to participate in STEM activities that without the program, we may have never had the opportunity or would have never known existed."

## ***Morgan Chase, Ruidoso High School, Southeastern Region***

"MESA has introduced me to new subjects, such as epidemiology and engineering. When I first entered high school, I thought I wanted to go into engineering. Through MESA, I realized that engineering was not quite the right fit for me. I also realized that epidemiology is a really neat way to combine math and biology, which are two subjects that I really love."

## ***Angelina Alvarez, Alta Vista Early College High School, Southwestern Region***

"The first leadership role I earned was in MESA, during my eighth-grade year. I developed the skills of a strong leader early; taking the initiative, remaining open-minded, quick thinking and gaining a sense of confidence. The detailed planning and time management that went into preparing for the competition while also juggling my academics allowed me to keep organized and give my best efforts in every endeavor. I developed several skills that have become defining traits, as I explored STEM fields and all that MESA had to offer."

# DONORS





NM MESA, INC. 2019-2020

# BOARD OF DIRECTORS

## OFFICERS

Jon Hawkins  
President  
Manager, Advanced Technology and Strategy  
PNM

Frank Maestas, P.E., Ph.D.  
Vice President  
EVP, Chief Operations Officer  
Applied Research Associates, Inc.

Imelda Atencio  
Treasurer  
Chief, System Technologies Section  
Laser Division  
U.S. Air Force Research Laboratory

Andrew Salazar  
Secretary  
Principal  
Iron Gate Intellectual Property

## CONGRESSIONAL ADVISORY COMMITTEE

Michelle Kavanaugh  
Constituent Liaison  
Office of Senator Tom Udall

Field Representative  
Constituent Liaison  
Office of Senator Martin Heinrich

Patrick Duran  
Constituent Liaison  
Office of Congressman Ben Ray Lujan

## MEMBERS

Rafael Gonzales  
Manager MESAFab Operations IV  
Sandia National Laboratories

John P. (Jack) Jekowski  
Inovative Technology Partnerships

TK O'Geary  
BAE Systems

Amanda Trujillo Davis  
Professional Solution LLC - Regulatory  
Environmental Services  
Environmental Regulatory Program Specialist

Anthony A. Ortiz  
Director of Admission  
New Mexico Institute of Mining and Technology  
Office of Admissions

Danielle Mares  
R & D Engineer 3  
Los Alamos National Laboratory

Dr. Lakshmi Reddi, PhD., P.E.  
New Mexico State University  
Dean, College of Engineering

## ALTERNATE MEMBERS

Melissa Jaramillo-Fleming  
VP/Student & University Relations  
New Mexico Institute of Mining & Technology

Derek Benavidez  
Engineering Manager  
Los Alamos National Laboratory

## ADVISOR REPRESENTATIVES

Martha Pena (Active Member)  
Retired - Robertson High School

Monica Rodriguez-Hudson  
Goddard HS

## NM MESA Inc.

Toney Begay  
Executive Director  
2808 Central Ave S.E.  
Albuquerque, NM 87106  
Phone: 505-366-2500  
Email: [tbegay@nmmesa.org](mailto:tbegay@nmmesa.org)

## MESA EMERITUS MEMBERS

Dora Alcala  
Ted Sahn  
Herb Fernandez  
Jim Tarro

## WORKING COMMITTEES

**Finance Committee**  
Imelda Atencio

**Nominating Committee**  
Andrew Salazar  
TK O'Geary  
Tony Ortiz  
Danielle Mares  
Imelda Atencio

