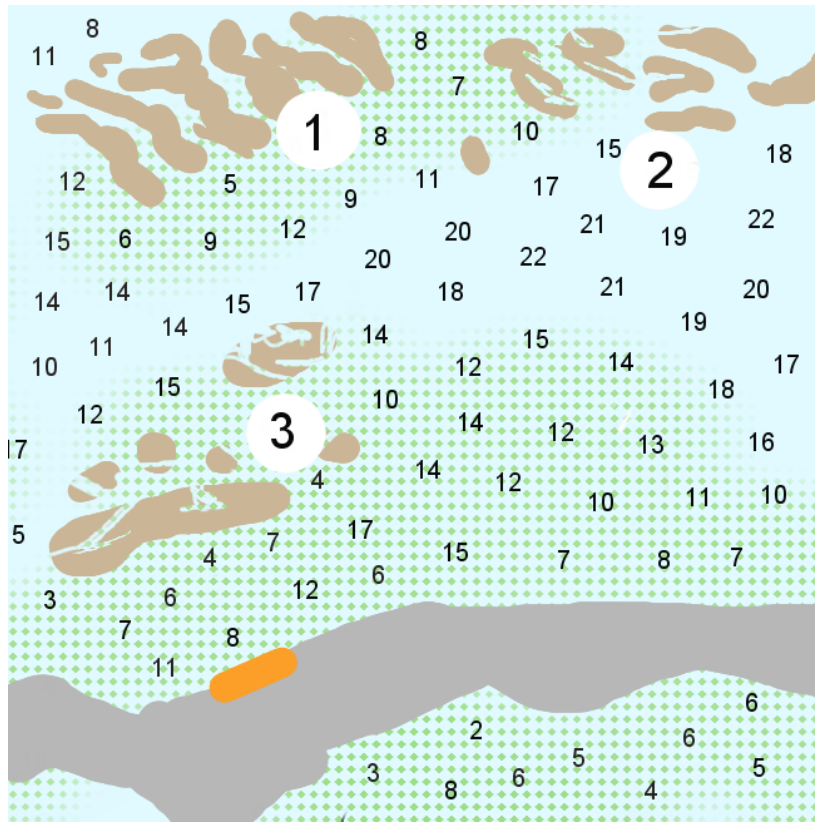
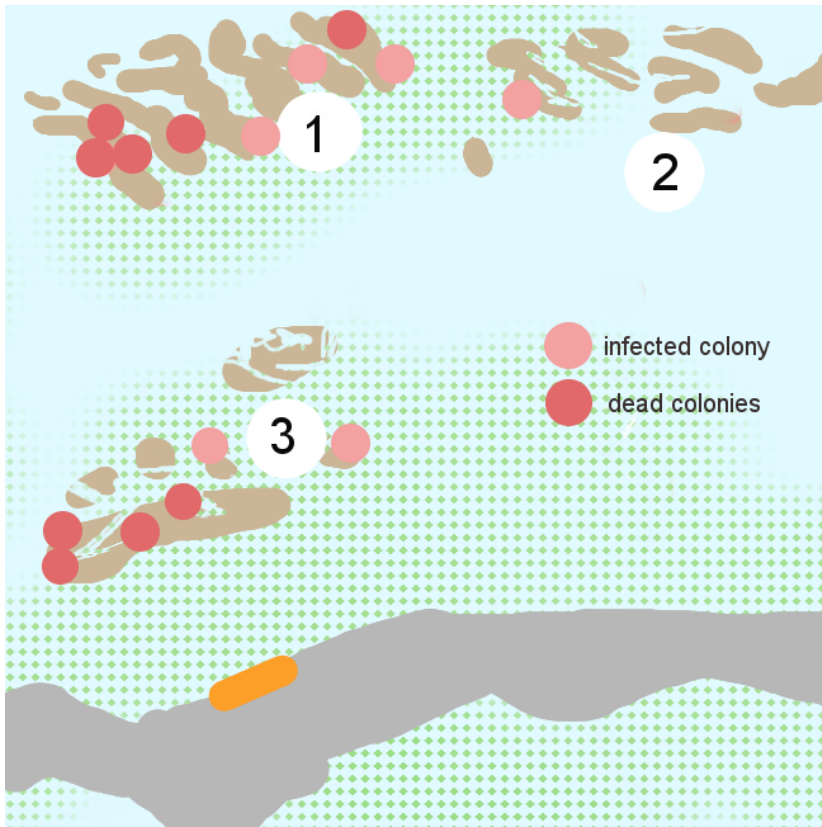


| Site | Diversity (# of species in each group) |                 |      |               |
|------|--|-----------------|------|---------------|
|      | Stony Corals                           | Flexible Corals | Fish | Invertebrates |
| 1    | 28                                     | 15              | 45   | 102           |
| 2    | 30                                     | 7               | 78   | 218           |
| 3    | 12                                     | 8               | 28   | 125           |



- sandy bottom
- seagrass bottom
- coral reef
- land
- marina



- sandy bottom
- seagrass bottom
- coral reef
- land
- marina
- infected colony
- dead colonies