



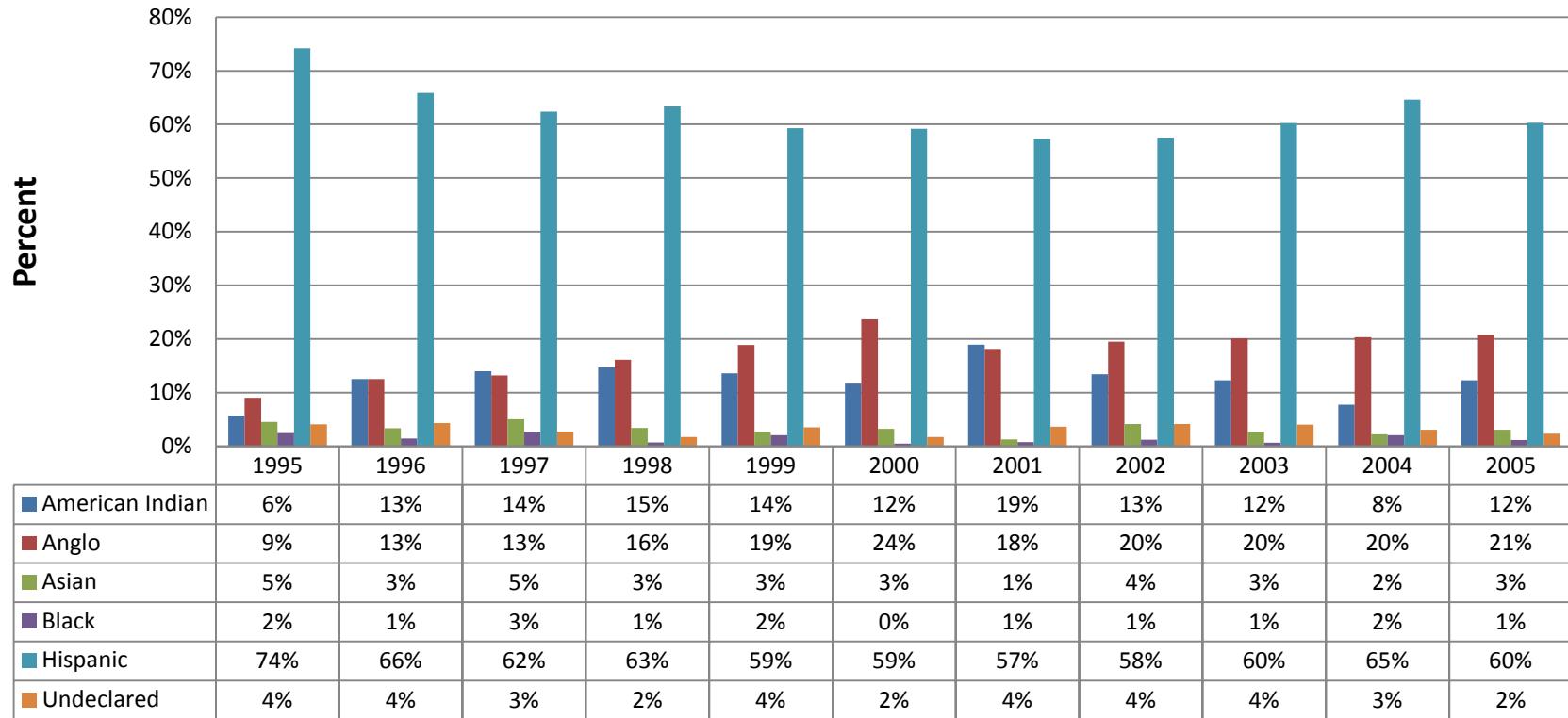
Longitudinal Research Study: 2011

NM MESA Seniors 1995-2005

(n=3902)

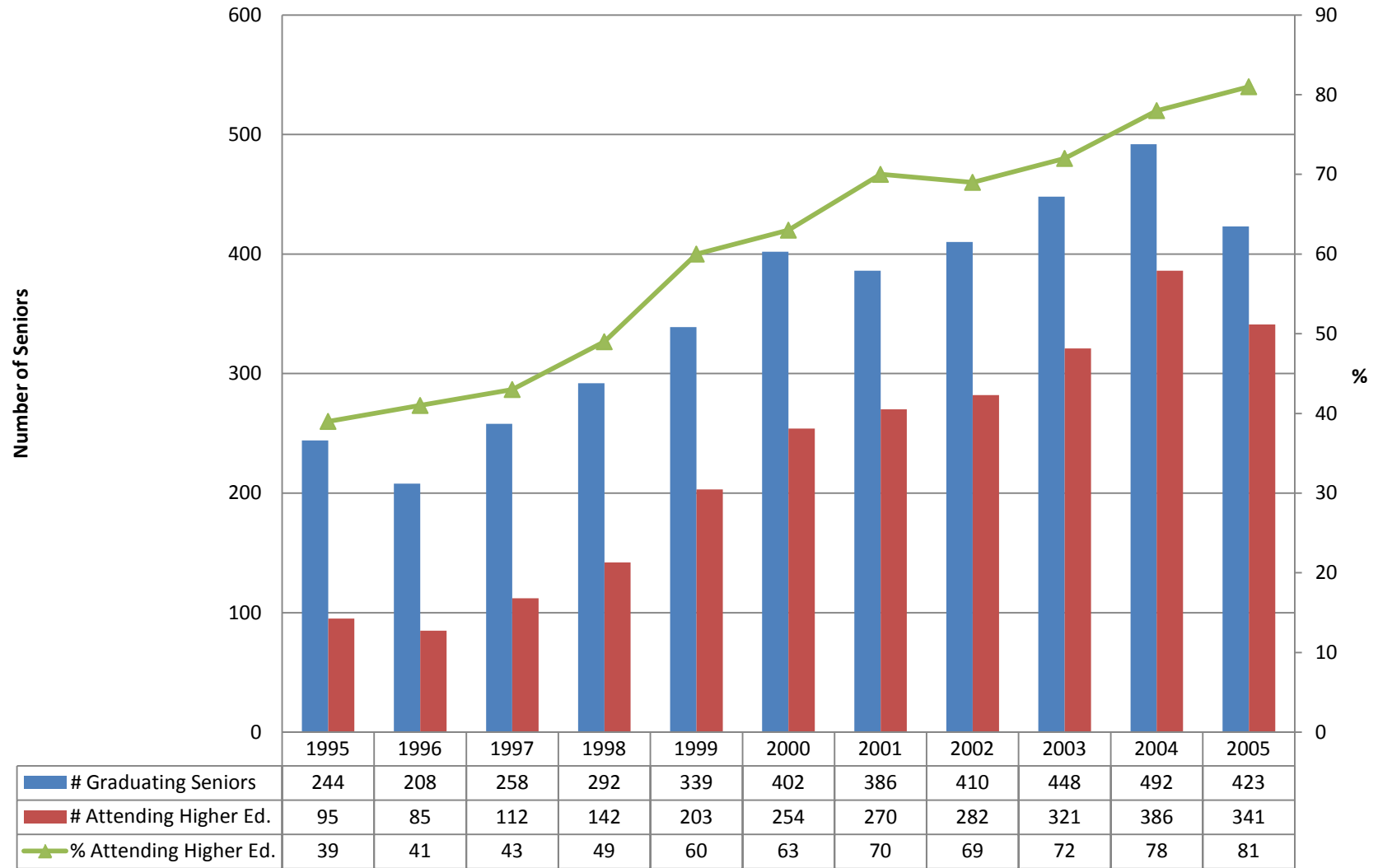
Compiled and Reported by:
Fred Youberg, IT Manager
NM MESA Inc.

Ethnicity of Graduating MESA Seniors



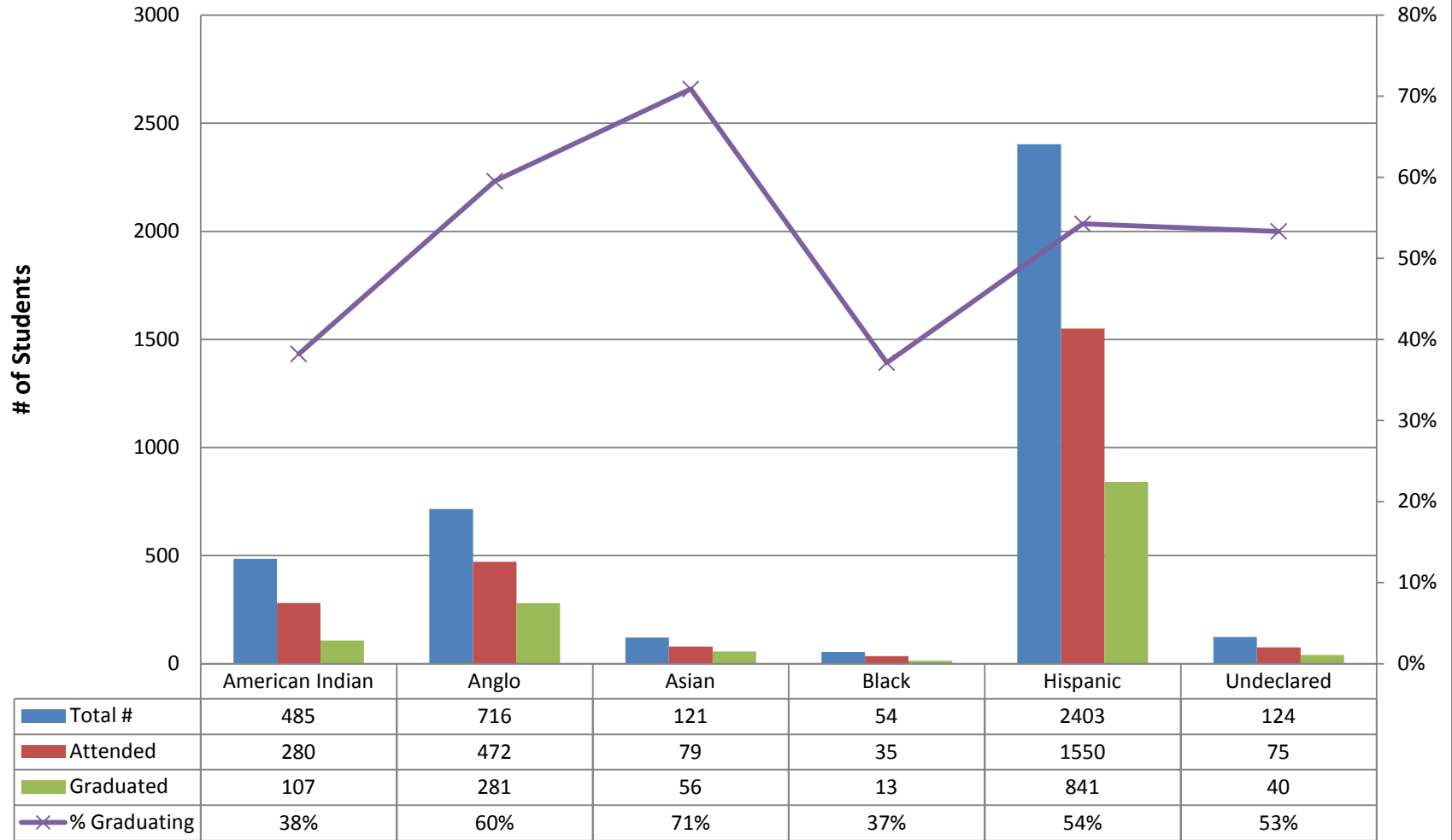
Source: National Student Clearinghouse: NM MESA Seniors 1995-2005

Higher Education Attendance for MESA Seniors



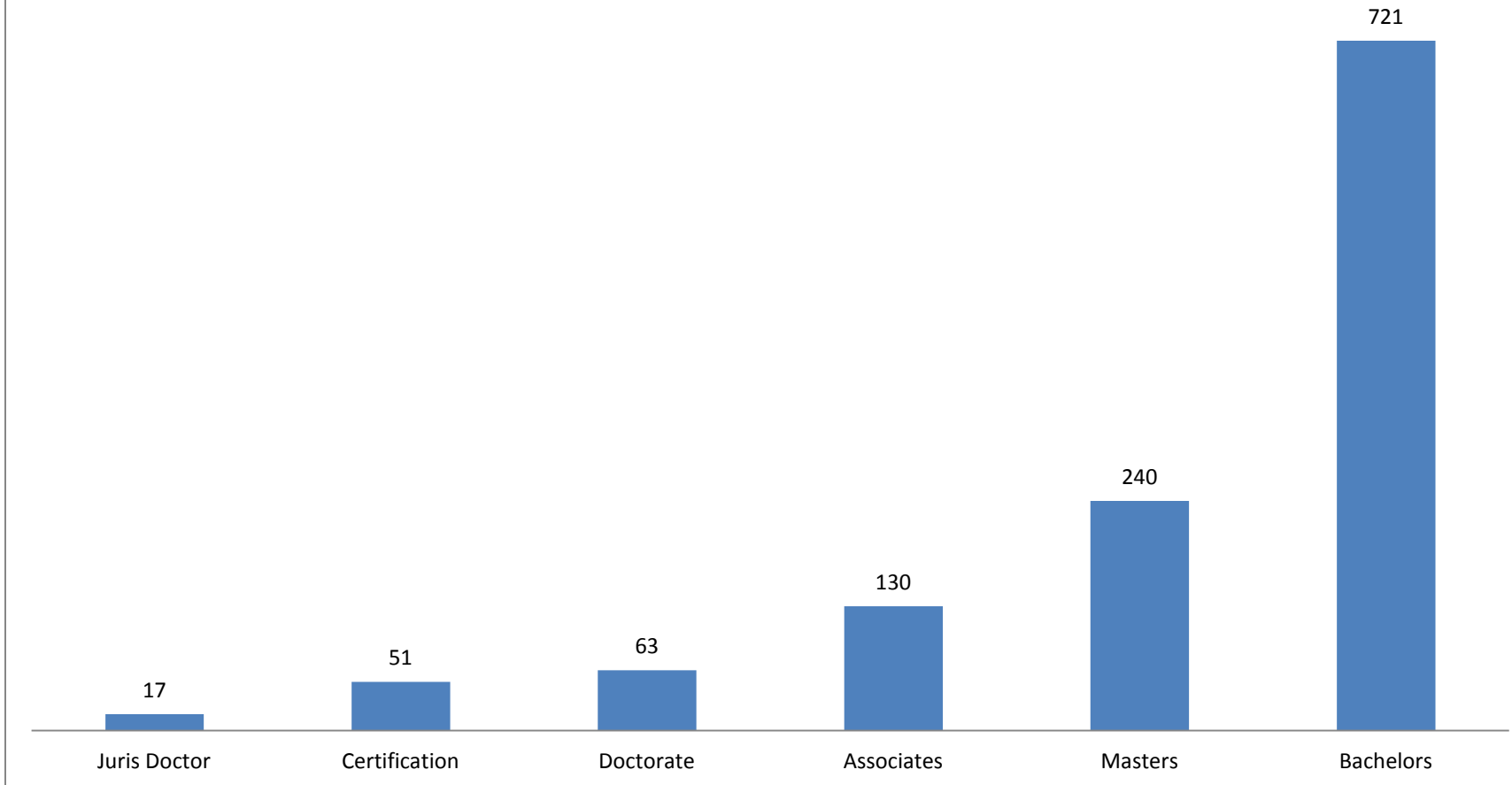
Source: National Student Clearinghouse: NM MESA Seniors 1995-2005

Ethnicity of MESA Seniors Attending and Graduating From Higher Education 1995-2005



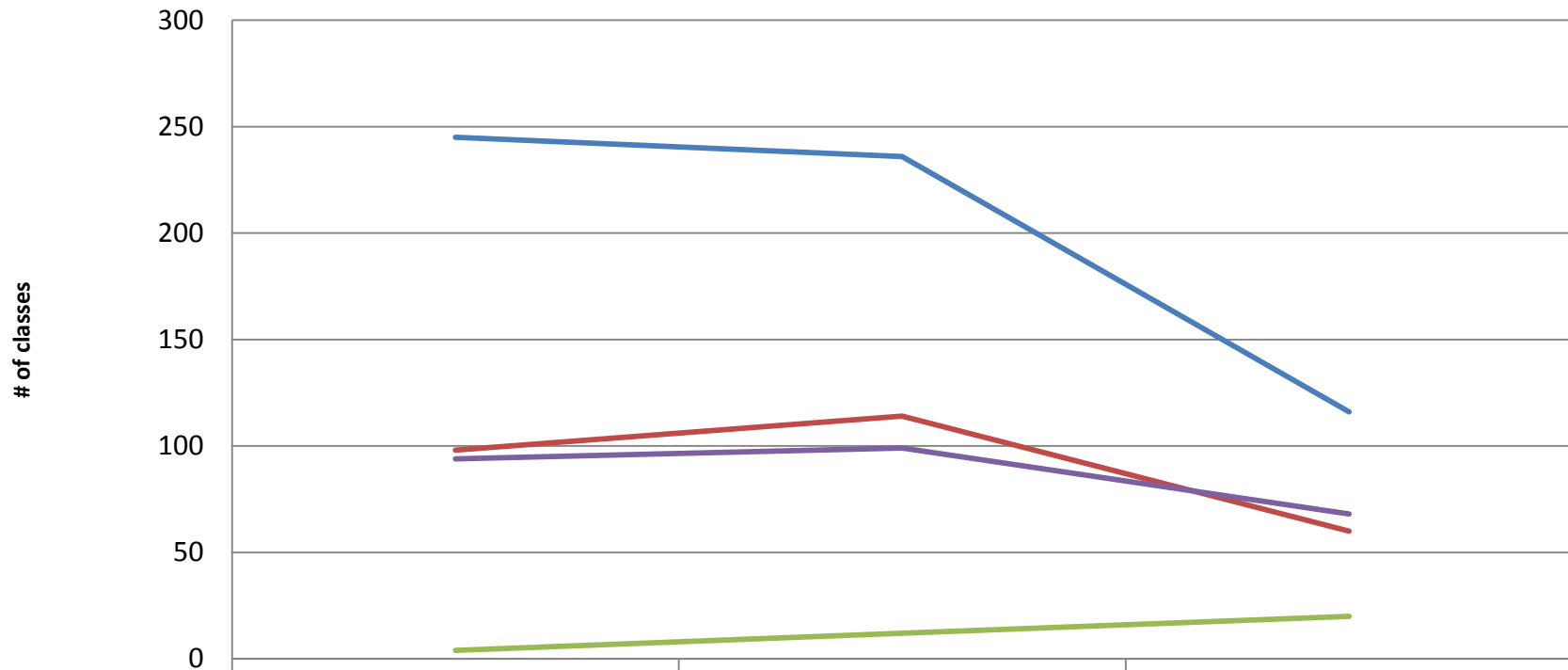
Source: National Student Clearinghouse: NM MESA Seniors 1995-2005

Degrees Earned by NM MESA Alumni (1995-2005)



Source: National Student Clearinghouse: NM MESA Seniors 1995-2005

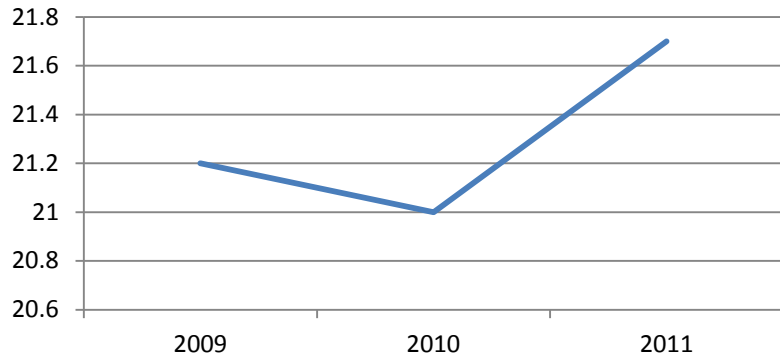
Advance Placement (AP) Classes Taken By MESA Seniors



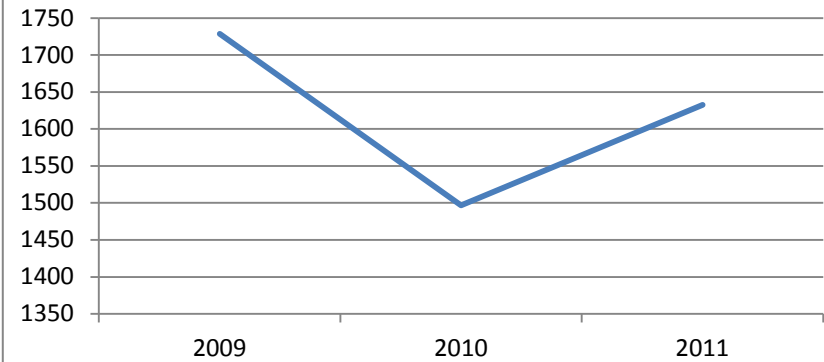
	2009	2010	2011
English	245	236	116
Math	98	114	60
Other STEM	4	12	20
Science	94	99	68

Source: NM MESA Information Management System; 2009-2011 Seniors

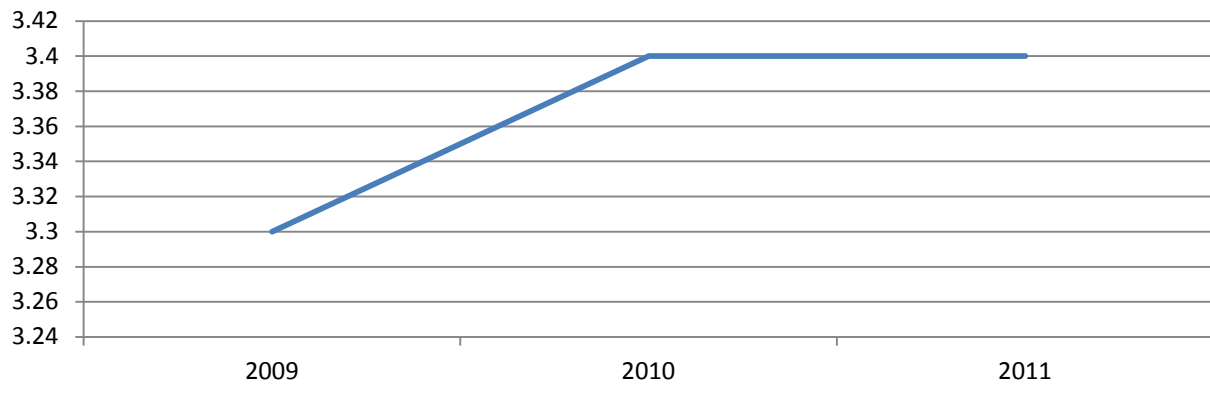
Average ACT Scores for MESA Seniors



Average SAT Scores for MESA Seniors



Cumulative GPA of MESA Seniors



Source: NM MESA Information Management System; 2009-2011 Seniors



MISSION

Empower and motivate New Mexico's culturally diverse students with science, technology, engineering and math (STEM) enrichment

VISION

Diverse, well educated, professionals who reach their full potential as leaders through Math, Engineering, Science and technology Achievement (MESA)

New Mexico MESA, Inc.

2808 Central SE

Albuquerque, NM 87106